

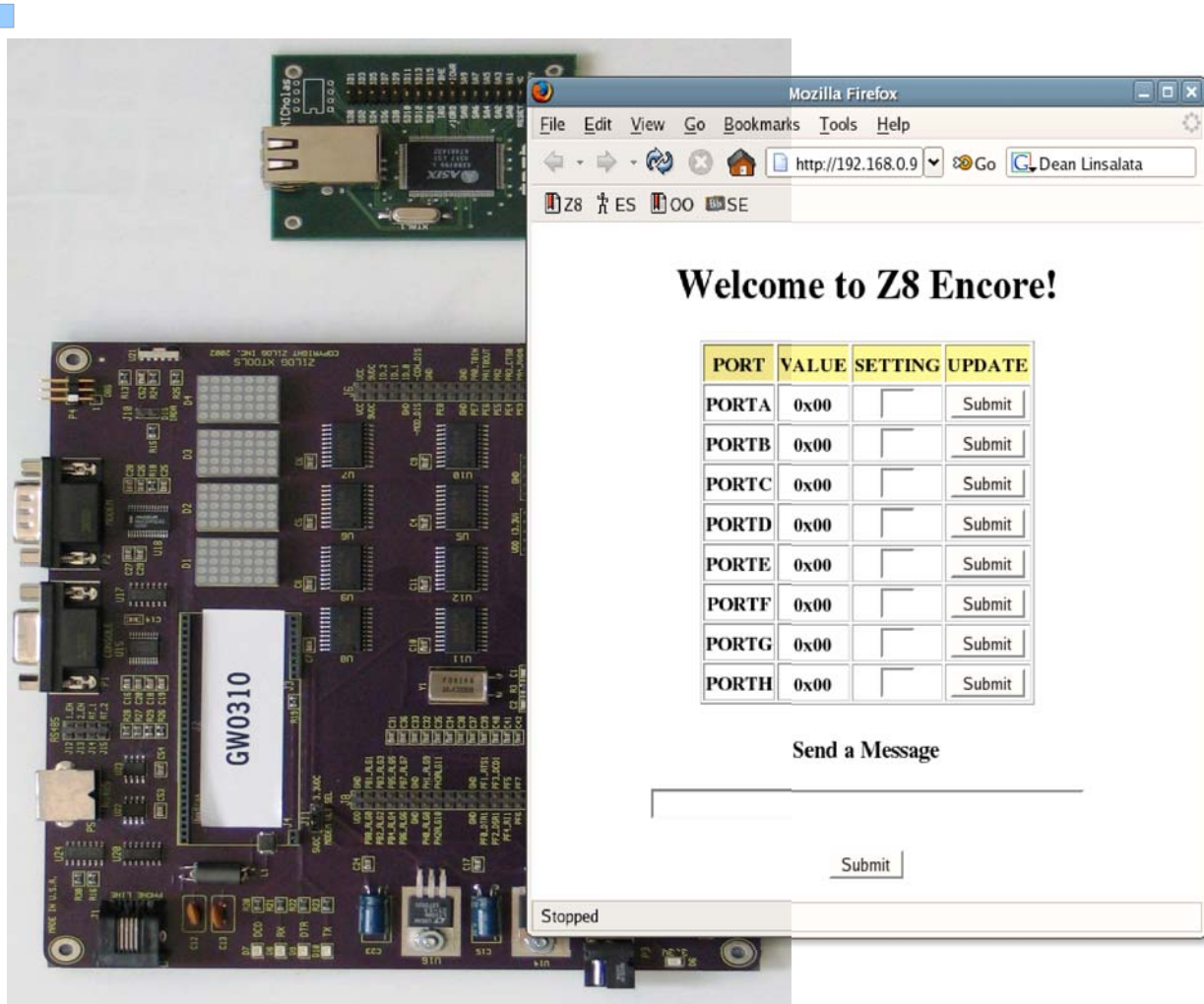
# Zilog Ethernet Port Controller

Real-Time Embedded Systems, George Washington University, Spring 2006  
Dean Linsalata, deanl@gwu.edu

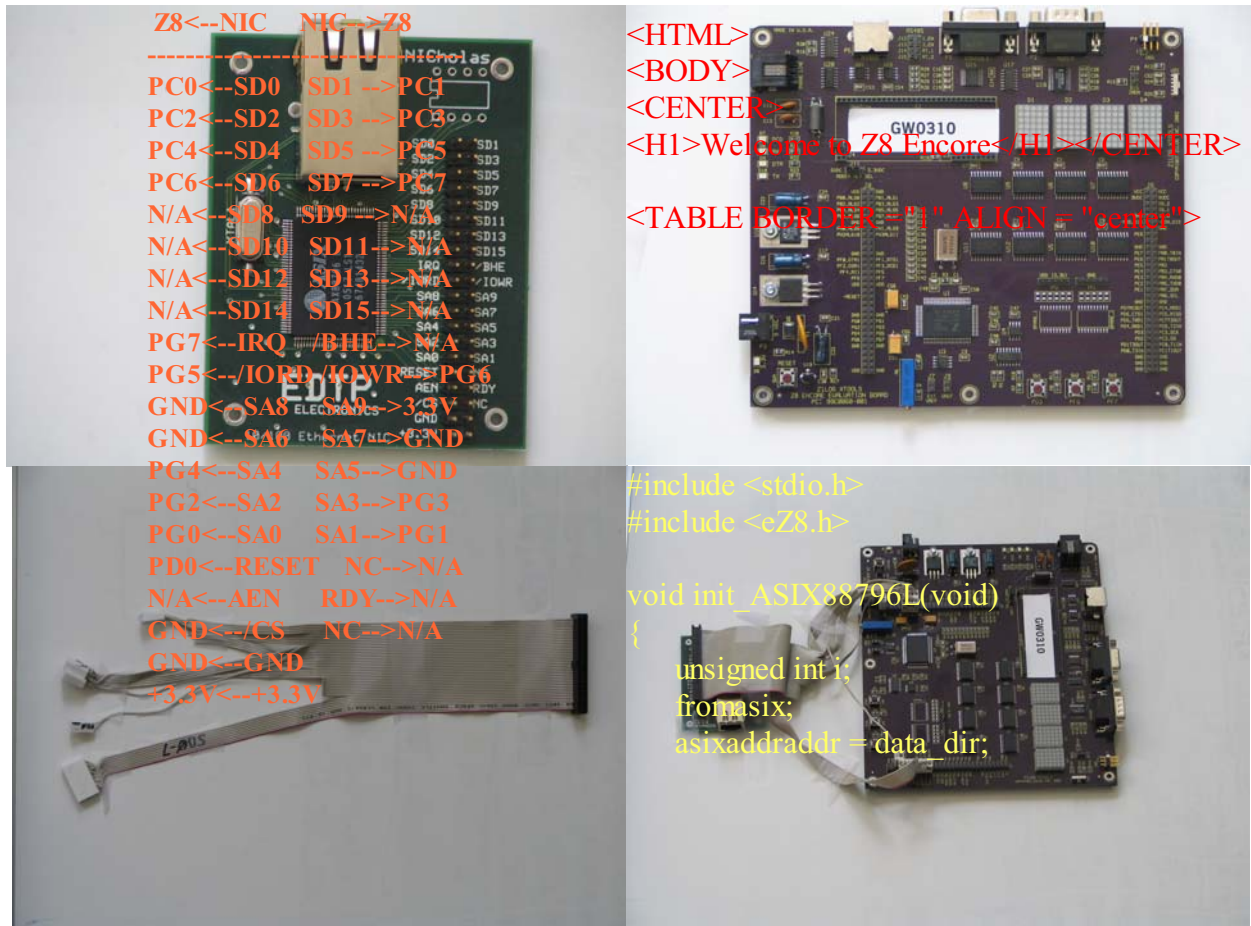
## Project Abstract

The idea of this project was to have a micro-controller system in your home that is connected to your home LAN. Then you or your family, from a remote location, that has access to the Internet and a standard browser, can control the port settings of your home controller. The controller could have many devices controlled by these ports. Such as household lighting, electronic door locks, or even your electric coffee maker. The idea was to show what the future can be like and to learn more on networking.

## Final Project



Work in Progress



## Lessons Learned

- Connecting electronic parts (wiring, connectors, soldering)
- Working with electronic schematics and diagrams
- Micro-Controller programming(C language, memory constraints, timings, etc.)
- Ethernet (the Ethernet packet, TCP/IP protocol, the Network Stack)